

# MONTHLY MEMBERSHIP PROGRESS REPORT

LOCATION MAINE

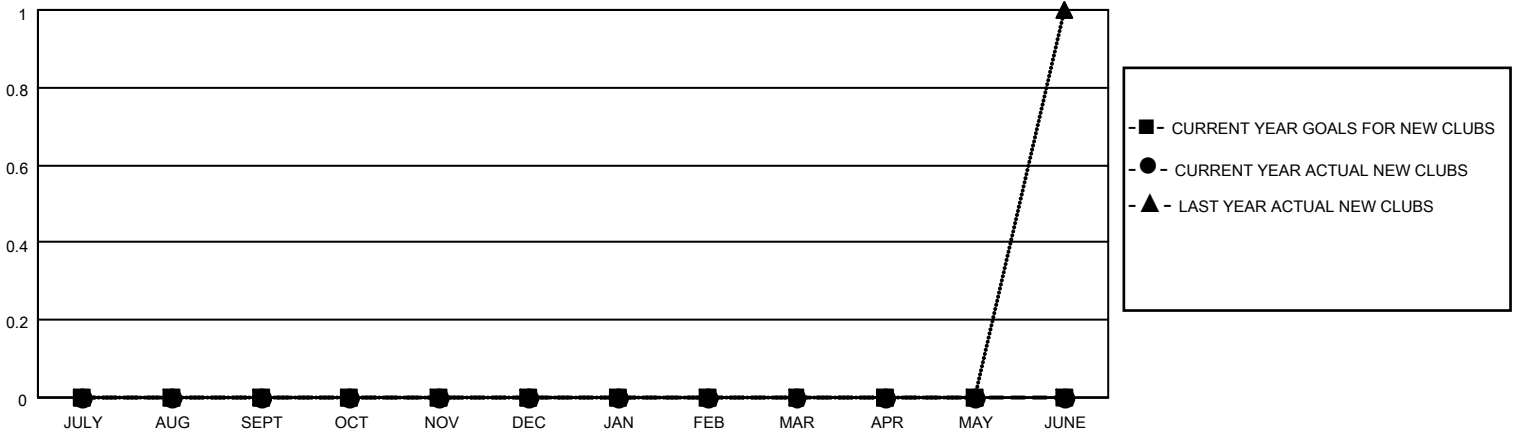
District 41

Results as of: 8/31/2021

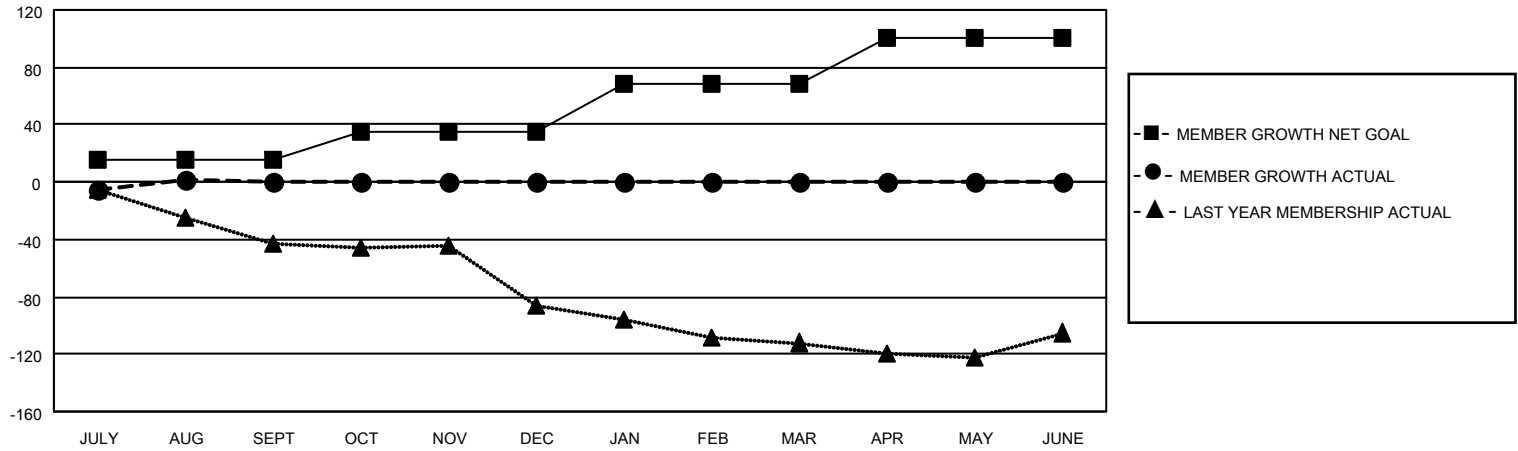
Clubs			
RESULTS FOR 2021-2022			
QUARTER	NEW CLUB GOAL	NEW CLUBS	DROPPED CLUBS
JULY/AUG/SEPT	0	0	0
OCT/NOV/DEC	0	0	0
JAN/FEB/MAR	0	0	0
APR/MAY/JUNE	0	0	0

Members			
RESULTS FOR 2021-2022			
QUARTER	MEMBER GROWTH NET GOAL	MEMBER GROWTH ACTUAL	DROPPED MEMBERS ACTUAL (including transfers)
JULY/AUG/SEPT	15	18	15
OCT/NOV/DEC	20	0	0
JAN/FEB/MAR	34	0	0
APR/MAY/JUNE	31	0	0

**GOALS AND ACTUAL NEW CLUBS CUMULATIVE**



**GOALS AND ACTUAL MEMBERS CUMULATIVE**



DROPPED CLUBS: 0	
<u>DROPPED MEMBERS</u>	
DECEASED	5
CLUB CANCELLED	0
OTHER	10
<b>TOTAL</b>	<b>15</b>

7 CLUBS OF 72 ADDED 1 OR MORE NEW MEMBERS

[CLICK HERE FOR CUMULATIVE MEMBERSHIP DATA](#)

<u>GENDER DISTRIBUTION</u>	
MALE	1,288 (66.29%)
FEMALE	655 (33.71%)
NON BINARY	0 (0.00%)
PREFER NOT TO ANSWER	0 (0.00%)
<b>TOTAL FAMILY UNIT MEMBERS</b>	<b>457</b>
<b>FAMILY MEMBERS PAYING HALF DUES</b>	<b>236</b>